

RDTS

Round Tapered Steel Pole



DESCRIPTION

Pantheon steel poles are ideal for commercial, industrial, municipal, and retail applications requiring a high quality and cost effective pole to support lighting, banners, security devices, and other pole mounted site elements. Pantheon poles are made of weldable grade cold rolled carbon steel tubing conforming to ASTM A500 Grade B. Fabricated to the highest standards Pantheon poles come in round and square straight steel versions as well as round tapered to meet your application needs. Hot rolled carbon steel base with anchor bolts ensure a strong and dependable mounting. Standard or custom drill mount and tenon mount options are easy to specify along with crossarms and coupling options and electrical box details for a complete offering.



Date: _____ Type: _____ Catalog Number: _____

Project Name: _____

ORDERING INFORMATION

ROUND TAPERED STEEL POLE							
HEIGHT	MODEL	GAUGE	BUTT DIA.	FINISH	MOUNTING	ELECTRICAL BOX	ACCESSORIES
10 10'	RDTS	11G 11 gauge	4.5 4.5"	BPC Black Powder Coat	D0 No Drilling	EB24A 24" Up @ 90°	TC.5 Threaded Coupling 1/2"
12 12'		7G 7 gauge	5.2 5.2"	WPC White Powder Coat	D1 1 @ 90°	EB24C 24" Up @ 270°	TC.75 Threaded Coupling 3/4"
14 14'			6.1 6.1"	BRZPC Dark Bronze Powder Coat	D2 2 @ 90°, 180°	EB24D 24" Up @ 180°	TC1 Threaded Coupling 1"
16 16'			6.6 6.6"	GPC Gray Powder Coat	D3 2 @ 90°, 270°	EB30A 30" Up @ 90°	EHH Extra Handhole (Specify Location)
18 18'			6.8 6.8"	GO Galvanized Only	D4 3 @ 60°, 180°, 300°	EB30B 30" Up @ 0°	GFCI Duplex GFCI Receptacle with Cover
20 20'			7.5 7.5"	BPCOG Black Powder Coat Over Galvanized	D5 3 @ 90°, 180°, 270°	EB30C 30" Up AT 270°	GFCI/IU Duplex GFCI Receptacle with In-Use Cover
25 25'			8 8"	WPCOG White Powder Coat Over Galvanized	D6 4 @ 0°, 90°, 180°, 270°	EB30D 30" Up @ 180°	
30 30'			8.5 8.5"	BRZPCOG Dark Bronze Powder Coat Over Galvanized	DC Custom Drilling	EB36A 36" Up @ 90°	
35 35'			9 9"	GPCOG Gray Powder Coat Over Galvanized	2.375TN 2 3/8" O.D. x 4" Tenon	EB36B 36" Up @ 0°	
39 39'			10 10"	CCPC Custom Color (Provide RAL# or Sample Color Chip)	2.875TN 2 7/8" O.D. x 4" Tenon	EB36C 36" Up @ 270°	
45 45'			11 11"		3.5TN 3 1/2" O.D. x 6" Tenon	EB36D 36" Up @ 180°	
50 50'			12 12"		4TN 4" O.D. x 6" Tenon	EBC Custom (Specify Height and Orientation)	
					CT Custom Tenon		

* GFI Receptacle Options Available : Specify in Accessories

POLE

Pole shaft shall be weldable-grade, hot-rolled, commercial quality carbon steel tubing conforming to ASTM A595 Grade A.

Options include 11 gauge and 7 gauge. All welds shall conform to AWS D1.2 using ER70S-6 electrodes.

A MTG. HGT.	B WALL GAUGE	C BUTT DIA.	D TOP DIA.	TOTAL LUM. WEIGHT	MAXIMUM EPA					
					90	100	110	120	130	140
10	11	4.5	3.1	370	31.5	25.2	23.5	19.5	16.4	14.0
14	11	5.2	3.1	365	30.4	24.2	22.5	18.5	15.5	13.2
20	11	6.1	3.3	340	25.9	20.4	18.8	15.4	12.8	10.8
20	11	6.6	3.7	385	25.5	20.0	18.5	15.2	12.6	10.7
25	11	6.1	2.6	280	19.0	14.7	13.5	10.8	8.8	7.2
25	11	6.8	3.3	325	19.4	15.0	13.8	11.1	9.1	7.5
30	11	6.8	2.6	275	14.6	11.1	10.1	7.9	6.2	5.0
30	11	7.5	3.3	315	23.3	18.0	16.6	13.4	11.0	9.1
30	11	8	3.8	345	27.4	21.4	19.7	16.1	13.4	11.3
30	11	8.5	4.3	375	31.3	24.7	22.9	18.8	15.8	13.4
30	11	9	4.8	405	35.2	27.9	25.9	21.5	18.1	15.4
30	7	9	4.8	585	57.0	45.6	42.5	35.4	29.9	25.6
35	11	7.5	2.6	265	17.0	13.1	11.9	9.4	7.5	6.0
35	11	8	3.1	295	20.6	15.8	14.5	11.5	9.3	7.6
35	11	8.5	3.6	320	23.9	18.4	17.0	13.7	11.2	9.3
35	11	9	4.1	345	26.9	21.0	19.4	15.8	13.1	11.1
35	7	9	4.1	490	44.9	35.5	33.0	27.2	22.9	19.4
39	11	8	2.5	260	15.8	12.1	11.1	8.7	6.8	5.4
39	11	9	3.5	305	21.9	16.8	15.4	12.3	10.0	8.2
39	7	9	3.5	425	36.6	28.8	26.7	21.9	18.2	15.4
39	11	10	4.5	350	25.4	19.8	18.2	14.9	12.4	10.4
39	7	11	5.5	600	53.7	43.0	40.0	33.2	27.8	23.6

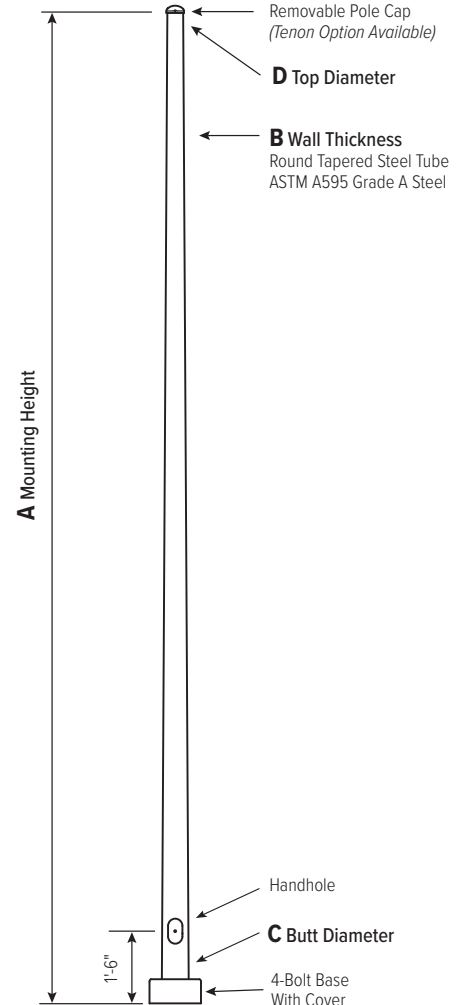
2-PIECE SHAFT DESIGN

A MTG. HGT.	B WALL GAUGE	C BUTT DIA.	D TOP DIA.	TOTAL LUM. WEIGHT	MAXIMUM EPA					
					90	100	110	120	130	140
45	11	10	3.9	285	19.2	14.6	13.4	10.5	8.5	7.0
45	7	11	4.9	510	41.1	32.5	30.3	24.9	20.8	17.5
45	7	12	5.9	600	57.9	47.3	44.4	37.1	31.7	26.7
50	11	10	3.2	250	15.7	11.5	10.3	7.9	6.0	4.7
50	7	11	4.2	495	34.4	26.9	24.7	20.9	16.7	13.9
50	7	12	5.2	525	41.2	33.0	30.9	25.6	21.9	18.7

C BUTT DIA.	F BOLT CIR. DIA.	G BASE SQ.	H BOLT PROJ.	I BOLT SIZE
4.5	7.5-8.5	8	3.75	.75 × 17 × 3
5.2	8 - 9	8.5	3.75	.75 × 17 × 3
6.1 - 6.6	9.5 - 10.5	10	3.75	.75 × 30 × 3
6.8	10 - 11	10	3.75	.75 × 30 × 3
7.0* - 7.5	10.5 - 11.5	10.5	4.875	1 × 36 × 4
8.0	11 - 12	11	4.875	1 × 36 × 4
8.5	11.5-12.5	12	4.875	1 × 36 × 4
9.0 (f1 Gauge)	12 - 13	12.375	4.875	1 × 36 × 4
9.0 (7 Gauge)	13 - 14	12.75	5.875	1.25 × 48 × 6
10	13.5 - 14.5	13	4.875	1 × 48 × 4
11	15 - 16	14	5.875	1.25 × 48 × 6
12	16 - 17	15.5	6.75	1.5 × 54 × 6

* Nominal

* Dimensions in Inches



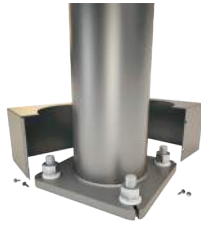
Powder Coated, Galvanized or Powder Coated over Galvanized Finish Per Customer Specification.

EPA NOTES: Effective Projected Area (EPA) in square feet. EPA's calculated using wind velocity (mph) indicated in accordance with 2009 AASHTO LTS-5 using a 25-year design life. Maximum EPA is based on the luminaire weight shown. Increased luminaire weight may reduce the maximum EPA. If weight is exceeded, or if other design life or code is required, please consult the factory.

WARNING: Do not install light pole without luminaire.

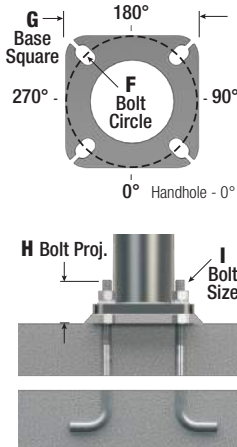
BASE STYLE

4-Bolt Steel Base Plate of fabricated hot rolled carbon steel conforming to ASTM A36 or equivalent (36 ksi minimum yield) with 2-piece Base Cover and attaching hardware. Base Cover will be fabricated from metal materials.

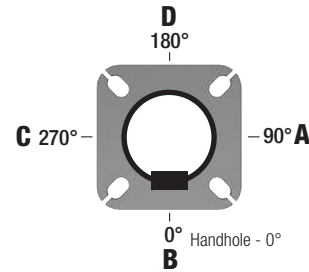


ANCHORAGE

Anchorage Kit will include four (4) L-shaped Steel Anchor Bolts conforming to AASHTO M314-90 Grade 55. Ten inches (10") of threaded end will be galvanized per ASTM A153. Kits will contain eight (8) Hex Nuts, four (4) Lock Washers, and eight (8) Flat Washers (all components Galvanized Steel). A paper bolt circle template will be provided.



POLE ORIENTATION



MOUNTING OPTIONS

SIDE DRILL MOUNT

Includes removable pole cap.

NOTE: A luminaire drilling template must be supplied at time of order.



TENON MOUNT

For Tenon Mount applications specify both Tenon diameter and length.



HANDHOLE

UP TO 5.9" BUTT DIAMETERS

Reinforced, 3" x 5" Handhole with cover, stainless steel screw and backbar. A grounding provision incorporating a tapped 1/2"-13NC hole will be provided.



6"+ BUTT DIAMETERS

Reinforced, 4" x 6 1/2" Handhole with cover, stainless steel screw and backbar. A grounding provision incorporating a tapped 1/2"-13NC hole will be provided.

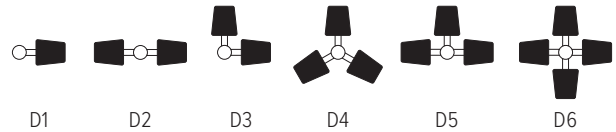


BASE COVER

Square metal powder coated Base Covers are standard on all RDTS poles.



DRILL MOUNT OPTIONS



ELECTRICAL BOX

NOTE: GFCI options must be specified in Accessories.



BOX ONLY

GFCI

Duplex GFCI
Receptacle with Cover

GFCI/IU

Duplex GFCI
Receptacle
with In-Use Cover

VIBRATION DAMPER

If determined necessary by Pantheon Lighting, an internal, factory installed, Second Mode Vibration Damper will be provided. Customer specification of the damper is available.

ADDERS

FLOODLIGHT CROSSARM ADDERS		
Single Side Mount Square Floodlight Arm for SSS	SQARM-SQSS	
Single Side Mount Round Floodlight Arm for SSS	RDARM-SQSS	
Double Square Floodlight Arm (In Line 3')	DBLARM-LN3	
Triple Square Floodlight Arm (In Line 5'6")	TPLARM-LN5.5	
Quad Square Floodlight Arm (4 @ 90°)	QUDARM-4	
Quad Square Floodlight Arm (In-Line 5'6")	QUDARM-LN5.5	
Quad Square Floodlight Arm, (In-Line 6'6")	QUDARM-LN6.5	

ALUM BULLHORN CROSSARM ADDERS		
Double Bull-Horn (In Line, 3')	DBLBHRN-LN3	
Triple Bull-Horn (In Line, 5')	TPLBHRN-LN5	
Triple Bull-Horn, (3 @ 120°)	TPLBHRN-3	
Quad Bull-Horn (In-Line, 7' 6")	QUSBHRN-LN7.5	
Quad Bull-Horn (4 @ 90°)	QUSBHRN-4	

FREIGHT POLICY

Pole and Accessory prices are freight prepaid and included on all orders to Continental United States.

All freight allowed orders are subject to be held for freight consolidation (maximum of 2 weeks).

Pre-shipped Anchor Bolts requires a freight adder.