

PBR1-D

Dome-Top Illuminating Bollard



DESCRIPTION

The PBR1-D illuminating bollard is an economical versatile dome-top bollard ideal for retail centers, business parks, schools, transit centers, and medical facilities. Two optical distributions combined with a glass lens, white or silver cone reflector, or louvers achieve the desired coverage of areas while a choice of lumen packages and color temperatures ensure the right solution for a wide variety of applications. Options include GFCI outlet, fusing, surge protection, shielding, emergency battery backup, and microwave motion sensors. Lumen output is equivalent to 70W metal halide.



Date: _____ Type: _____ Catalog Number: _____

Project Name: _____

ORDERING INFORMATION

LUMINAIRE

MODEL	HEIGHT	OUTPUT	CCT	VOLTAGE	OPTIC	LENS	FINISH	OPTION
PBR1-D Dome-Top Illuminating Bollard	42 42"	LO Low Output: 10w	30K 3000K	UNV 120-277V	T3 Type III	PGR Prismatic Glass Lens	BL Black	SF Single Fuse (120-277V Only)
	36 36"	SO Standard Output: 15w	40K 4000K	347 347-480V ¹	T5 Type V	SCR Specular Cone Reflector	DB Dark Bronze	DF Double Fuse (120-277V Only)
	30 30"	HO High Output: 22w	50K 5000K			WCR White Cone Reflector	CC Custom RAL Color	SP Surge Protection
					LVR Louvers ²		GFCI GFCI Outlet (15A, 120V)	
					DPC Diffuse Polycarbonate w/ White Cone Reflector ²		HSS180BL 180° House-Side Shield, Black	
							HSS180DB 180° House-Side Shield, Dark Bronze	
							HSS180CC 180° House-Side Shield, Custom Color	
							MSDP Internal Microwave Sensor ³	
							EM Emergency Battery Backup (90 Minutes, 120-277V Only)	
							EMCS -4°F Cold Start Emergency Battery Backup (90 Minutes, 120-277V Only)	

¹347V is only available on the Standard Output Model.

²Louvers and Diffused Polycarbonate with White Cone Reflector are only available with Type V Optics.

³Internal Microwave Sensor has dimming and remote programming capabilities for mounting heights of 8' to 19'. Available on 120-277V bollards only.

See Page 4 for ordering information of available accessories.

PBRI-D

Dome-Top Illuminating Bollard



PHYSICAL	HOUSING	Extruded Aluminum Housing with Flush Mounting Base & Vandal-Resistant Screw, Domed Top, Internal Ballast Tray for Easy Maintenance
	OVERALL DIMENSIONS	7" Diameter x 42.25" Height
	OPERATING TEMPERATURE	-40°F to 104°F (-40°C to 40°C)
	MOUNTING	Mounting Kit with 8" Anchor Bolts Included
	FINISH	Textured Architectural Bronze or Black Powdercoat Finish over a Chromate Conversion Coating

ELECTRICAL	POWER	Low Output	Standard Output	High Output
		10 Watts	15 Watts	22 Watts
	CURRENT	0.08 amps at 120 volts 0.04 amps at 277 volts	0.13 amps at 120 volts 0.05 amps at 277 volts	0.18 amps at 120 volts 0.08 amps at 277 volts
		CONTROL	0-10V Dimming	
	DRIVER	Electronic Driver 120-277V or 347V, 50/60Hz Less than 20% THD and PF>0.9 Internal Surge Protection 2kV 150 Microamps Dimming Source Current		

PHOTOMETRIC	LED	3000K	4000K	5000K	
	DELIVERED LUMEN OUTPUT	up to 2178 lumens	up to 2362 lumens	up to 2461 lumens	
	EFFICACY	up to 91.5 lumens per watt	up to 99.2 lumens per watt	up to 103.4 lumens per watt	
	CRI	80			
	LUMEN MAINTENANCE	L70 > 147,000 Hours at 77°F*			
	BUG RATING	Lens	Low Output	Standard Output	High Output
		Prismatic Glass Type III	1-3-1	1-3-1	1-3-1
		Prismatic Glass Type V	1-3-1	1-3-1	1-3-1
Louvers Type V		0-2-0	1-2-1	1-3-1	
Cone Reflectors Type III		0-2-1	1-3-1	1-3-1	
Cone Reflectors Type V	1-3-1	1-3-1	1-3-1		

LIGHT DISTRIBUTIONS	OPTIC	CCT	LOW OUTPUT		STANDARD OUTPUT		HIGH OUTPUT	
			LUMENS	EFFICACY	LUMENS	EFFICACY	LUMENS	EFFICACY
Prismatic Glass Lens Type III		3000K	787	69.6	1101	69.2	1652	69.4
		4000K	853	75.5	1195	75.2	1792	75.3
		5000K	889	78.7	1246	78.3	1867	78.4
Prismatic Glass Lens Type V		3000K	768	68.0	1076	67.7	1613	67.8
		4000K	833	73.7	1167	73.4	1750	73.5
		5000K	868	76.8	1215	76.4	1823	76.6
Louvers Type V		3000K	531	47.0	744	46.8	1116	46.9
		4000K	576	51.0	807	50.8	1211	50.9
		5000K	600	53.1	841	52.9	1261	53.0
Cone Reflectors Type III		3000K	738	65.3	1033	65	1549	65.1
		4000K	800	70.8	1120	70.4	1680	70.6
		5000K	834	73.8	1167	73.4	1750	73.5
Cone Reflectors Type V		3000K	1037	91.8	1452	91.3	2178	91.5
		4000K	1125	99.6	1575	99.1	2362	99.2
		5000K	1172	103.7	1641	103.2	2461	103.4

Values based on full output.

** LED life may vary under actual field conditions due to external factors. Lifetime estimates are generated from actual testing in a controlled environment. Values are conservatively derived from those numbers.

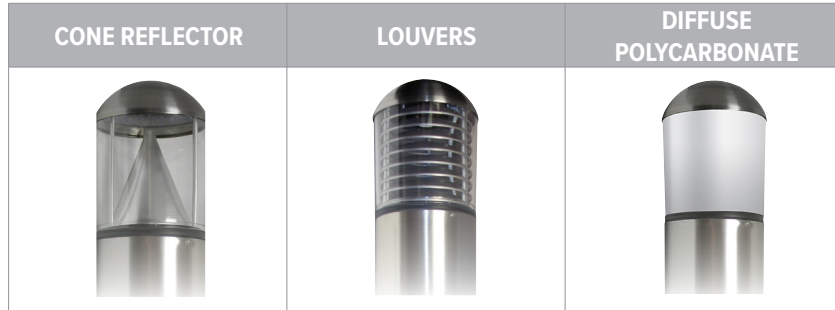
PBRI-D

Dome-Top Illuminating Bollard



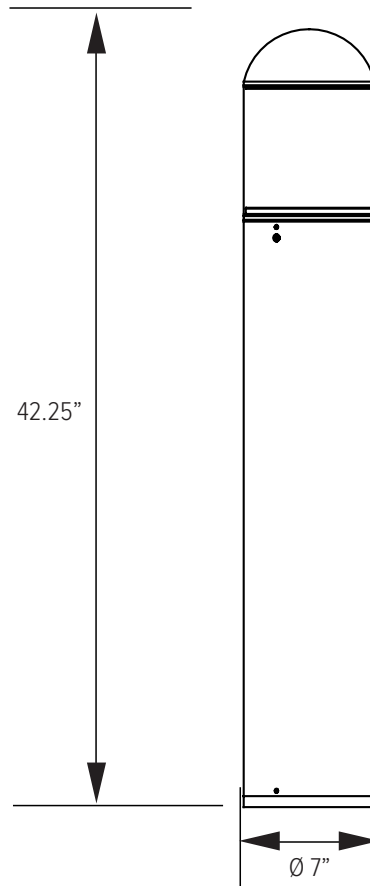
CERTIFICATIONS	SAFETY	CSA Certified
	INGRESS PROTECTION	IP65 Rated for Wet Locations
	WARRANTY	Limited Five Year Warranty

OPTICS



DIMENSIONS

All dimensions are shown in inches unless otherwise noted.



PBR1-D

Dome-Top Illuminating Bollard



ACCESSORIES

Accessories are sold separately and will be field installed. See page one for factory-installable options.

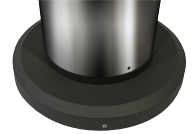
MSPRGMR

Remote Programming Tool for Internal Microwave Sensor



RFBASE

Bollard Retrofit Base Kit Adapts New Bollards to Most Existing Bolt Patterns. Die Cast with Powdercoat Finish, Hardware Included. 11 1/2" Dia. x 1 1/2" H



ORDERING INFORMATION

MOUNTING ACCESSORIES

PBR1-MK04AB

Mounting Kit- Includes Bracket and (3) 4" Zinc-Plated Anchor Bolts

PBR1-MK08AB (INCLUDED)

Mounting Kit- Includes Bracket and (3) 8" Zinc-Plated Anchor Bolts

PBR1-MK012AB

Mounting Kit- Includes Bracket and (3) 12" Zinc-Plated Anchor Bolts

PBR1-MK015AB

Mounting Kit- Includes Bracket and (3) 15" Zinc-Plated Anchor Bolts

PBR1-RFBASE-BL

Bollard Retrofit Base - Black - Die-Cast - ø11.5" x 1.5" H - Hardware Included - Adapts New Bollards to Most Existing Bolt Patterns

PBR1-RFBASE-DB

Bollard Retrofit Base - Dark Bronze - Die-Cast - ø11.5" x 1.5" H - Hardware Included - Adapts New Bollards to Most Existing Bolt Patterns

PBR1-RFBASE-CC

Bollard Retrofit Base - Black - Custom RAL Color - ø11.5" x 1.5" H - Hardware Included - Adapts New Bollards to Most Existing Bolt Patterns

MSPRGMR

Remote Programming Tool for Use With PBR1-MSDP

REPLACEMENT PARTS

PBR1-MSDP

Internal Microwave Sensor with Dimming and Remote Programming (120 to 277v Only)

PBR1-PLENS-CLEAR

Round UV Stabilized Polycarbonate Lens

PBR1-PLENS-OPAL

Diffused Opal Polycarbonate Lens

PBR1-BBASE-BL

Die-Cast Aluminum Base Plate - Black Finish

PBR1-BBASE-DB

Die-Cast Aluminum Base Plate - Dark Bronze Finish

PBR1-BBASE-CC

Die-Cast Aluminum Base Plate - Custom RAL Color

PBR1-ADP1

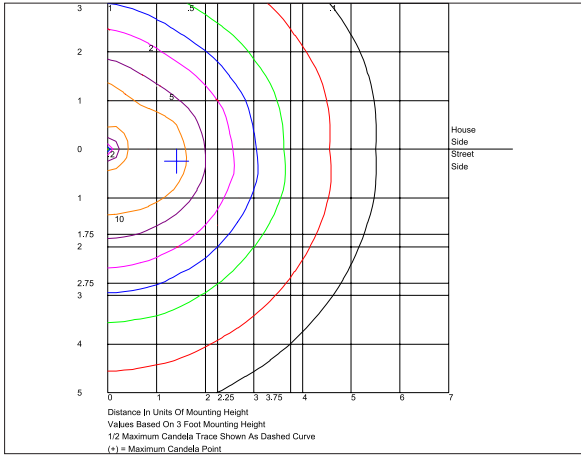
Adapter Plate With Gaskets for Outlet Boxes - Die-Cast Aluminum - Dark Bronze Finish

PBR1-D

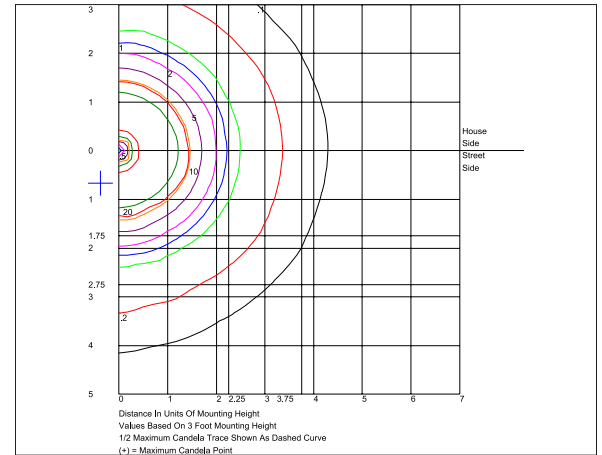
Dome-Top Illuminating Bollard



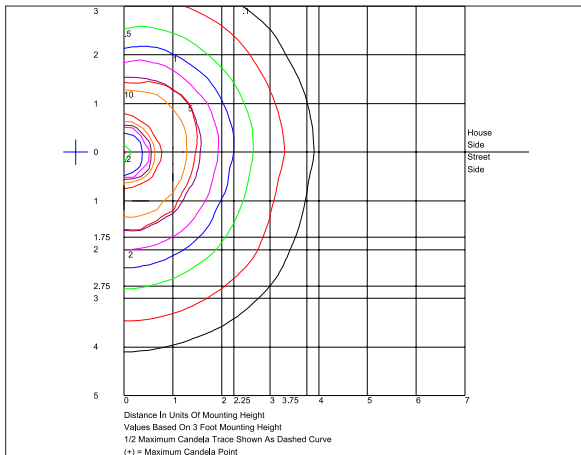
PHOTOMETRIC DATA



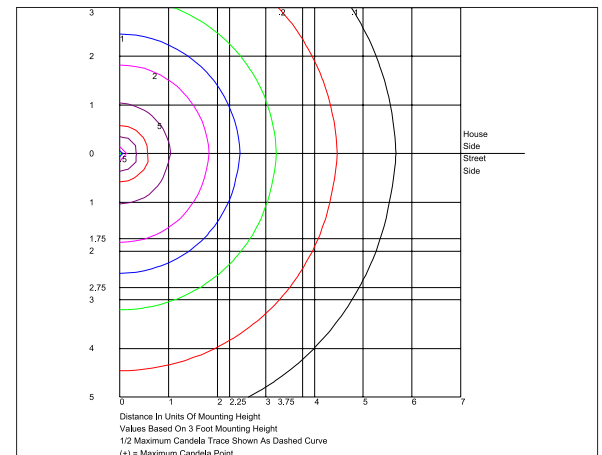
PBR1-22W-50KOUNV-T5-GLS
Grid in feet, Mounting Height = 3 Feet



PBR1-22W-50KOUNV-T5-SCR/WCR
Grid in feet, Mounting Height = 3 Feet



PBR1-22W-50KOUNV-T5-LVR
Grid in feet, Mounting Height = 3 Feet



PBR1-22W-50KOUNV-T5-DPC
Grid in feet, Mounting Height = 3 Feet