

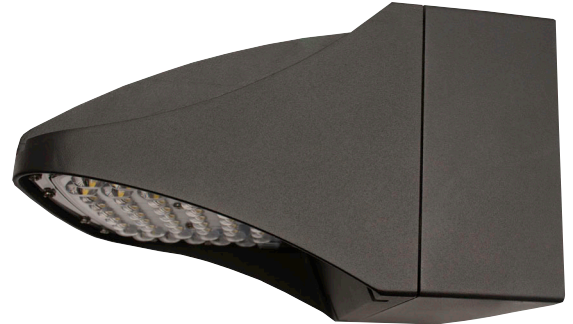
PWP1-S

Small LED Wall Pack



DESCRIPTION

The PWP1 Small Wall Pack is a full cutoff LED luminaire perfect for retail centers, industrial parks, schools, office buildings, and medical facilities. Depending on mounting height, uniformity requirements, and desired illumination levels, the luminaire is ideal for new construction or as a replacement for existing metal halide lighting systems up to 175 watts, delivering both effective lighting and significant cost savings. Available with numerous options for surge protection, photocell control, and microwave motion sensing, the PWP1 Small Pantheon Wall Pack is a versatile product that can meet your application needs.



Date: _____ Type: _____ Catalog Number: _____

Project Name: _____

ORDERING INFORMATION



FIXTURE	MODEL	CCT.	DRIVER	OPTICS	FINISH	OPTIONS
PWP1-S Small LED Wall Mount	17W	40K 4000K	UNV 120-277V	T4 D Type IV	BRZ Bronze	SF Single Fuse 120-277VAC
	25W	50K 5000K	347V 347-480V (25W & 37W models only)		CC Custom	DF Double Fuse 120-277VAC
	37W					SP Surge Protection
	81W					PCR3 3-Pin Twist Lock Photocell Receptacle
						PCR5 5-Pin Twist Lock Photocell Receptacle
						PCR7 7-Pin Twist Lock Photocell Receptacle

ACCESSORY & REPLACEMENT PARTS

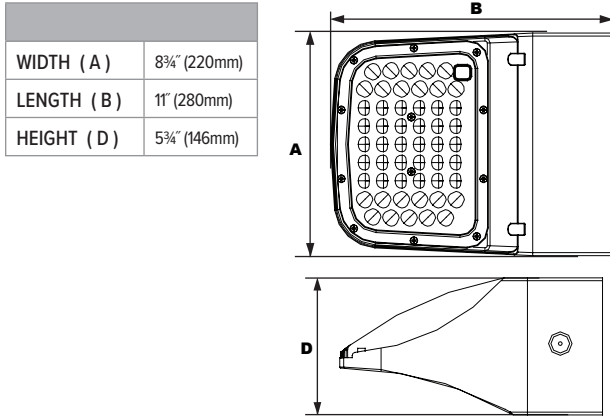
- TLNSC**
Twist Lock Non-Shorting (Open) Cap Disconnects Service to Fixture for Temporary or Permanent Disabling (Fixture Always Off). IP65, 480V Maximum.
- TLSC**
Twist Lock Shorting Cap Provides Fixed Service to Fixture (Fixture Always on). IP65, Rated Load 7200w Tungsten.
- PCTD120**
120VAC Time Delay Twist Lock Photocell
- PCTD277**
277VAC Time Delay Twist Lock Photocell
- PCUNVTL**
120-277VAC Universal Twist Lock Photocell
- PWP1TP**
Aluminum Two-Piece Trim Plate, Bronze Powdercoat Finish, 13"W x 9"H

- PC**
Photocell, 120-277VAC
- MSD**
Microwave Motion Sensor with Dimming for Mounting heights ≤ 25' (120-277VAC)
- MS**
Microwave On/Off Motion Sensor for Mounting Heights 8'-19' (120-277VAC)
- EM**
Battery Backup
90 minutes
(17W, 25W & 37W only)

PRODUCT SPECIFICATIONS

LUMEN OUTPUT	Up to 9,267 @ 5000K (see photometric data chart for details)
EFFICACY	Up to 122 Lm/W (see photometric data chart for details)
LUMEN MAINTENANCE	(L70): >646,000 hours @ 25C
COLOR TEMPERATURES	4000K, 5000K
CRI	80CRI
OPTICS	Clear One-Piece Molded Type IV UV-Stabilized Polycarbonate Lens.
OPERATING TEMPERATURE	-40°C to +50°C (-40F to +122F)
POWER CONSUMPTION	17w: Array: 16.6w, System: 19.4w 25w: Array: 24.9w, System: 28.4w 37w: Array: 37.3w, System: 41.8w 81w: Array: 80.8w, System: 83.7w
DRIVERS	Electronic Driver, 120-277V, 50/60Hz or 347-480V, 50/60Hz; Less Than 20% THD and PF>0.90. Standard Internal Surge Protection is 2kV for S/25w, 6kV for S/37w, S/81w, L/81W, L/112W, and L/174W. 0-10V Dimming Standard for a Dimming Range of 100% to 10%; Dimming Source Current is 150 Microamps.
CERTIFICATIONS	 
INGRESS PROTECTION	IP66 Sealed LED Compartment, Listed for Wet Locations
HOUSING	Die Cast Aluminum Housing with Full Cutoff Front Frame, Integral Heat Sinking, and Driver Compartment. Twist-Lock Photocell/Smart Controls Adaptable. Nickel-Plated Stainless Steel Hardware.
FINISH	Textured Architectural Bronze Powdercoat Finish Over a Chromate Conversion Coating. Custom Colors Available Upon Request.
MOUNTING OPTIONS	Mount Directly Over a 4" Recessed Outlet Box, Includes Easy-Hang "Two Hands Free" Wall Mounting Bracket with Built-In Level. Optional Trim Plate is Available for Use in Retrofit Applications to Cover Wall Surface Blemishes.
WARRANTY	5-Year Warranty for -40°C to +50°C Environment.

DIMENSIONS



PHOTOMETRIC PERFORMANCE

PHOTOMETRIC PERFORMANCE

LED Board Watts	Drive Current (mA)	Input Watts	Optics	4000 CCT 80 CRI					5000 CCT 80 CRI				
				Lumens	LPW	B	U	G	Lumens	LPW	B	U	G
17W	525	19	Type IV	2,140	112	1	0	1	2,326	120	1	0	1
25W		28		3,147	112	1	0	1	3,420	122	1	0	1
37W		42		4,454	106	1	0	1	4,599	110	1	0	1
81W		84		9,155	109	2	0	2	9,267	110	2	0	2

PROJECTED LUMEN MAINTENANCE

TM-21-11	Initial	25,000 Hrs	50,000 Hrs	100,000 Hrs	Calculated LED Life
L70 Lumen Maintenance @ 25°C / 77°F	1.00	0.99	0.98	0.95	646,000
L70 Lumen Maintenance @ 50°C / 122°F	1.00	0.98	0.97	0.93	455,000
L80 Lumen Maintenance @ 40°C / 104°F	1.00	0.98	0.97	0.94	320,000

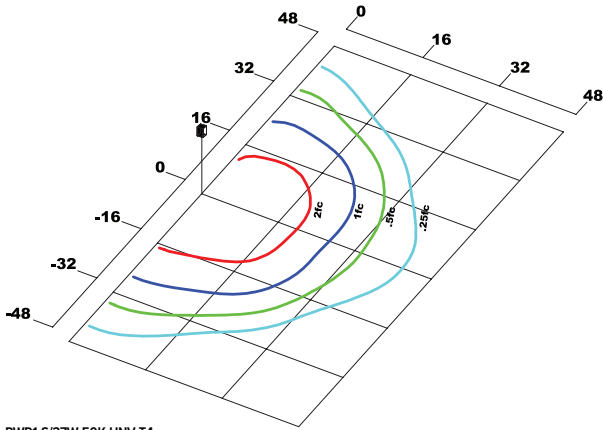
NOTES:

1. Projected per IESNA TM-21-11. Data references the extrapolated performance projections for the 525mA base model in a 25°C ambient, based on 10,000 hours of LED testing per IESNA LM-80-08.

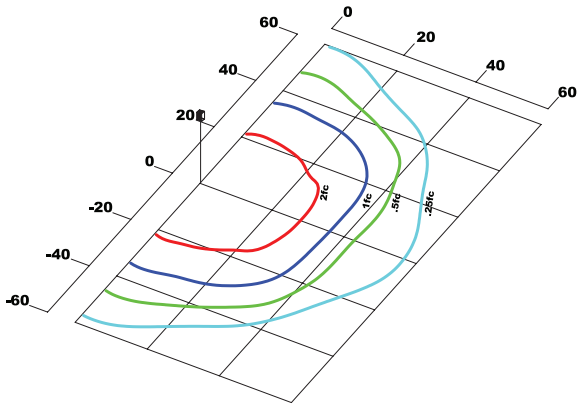
CONTROLS

Fixtures Ordered with Factory-Installed Photocell or Motion Sensor Controls are Internally Wired for Switching and/or 1-10V Dimming Within the Housing. Remote Direct Wired Interface of 1-10V Dimming is Not Implied and May Not Be Available, Please Consult Factory. Fixtures are NOT Designed for Use with Line Voltage Dimmers.

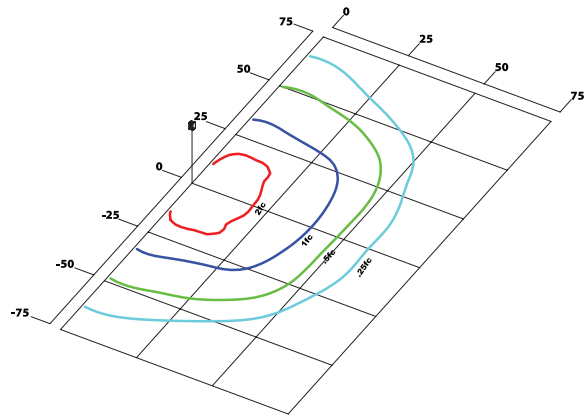
PHOTOMETRIC DATA



PWP1-S/37W-50K-UNV-T4
Type IV
Grid in MH
MH=16 Feet



PWP1-S/81W-50K-UNV-T4
Type IV
Grid in MH
MH=20 Feet



PWP1-S/81W-50K-UNV-T4
Type IV
Grid in MH
MH=25 Feet