

# PBR1-DSS

## Stainless Steel Dome Top Illuminating Bollard



### DESCRIPTION

The PBR1-DSS stainless steel dome top bollard is a cost-effective and elegant solution for commercial outdoor lighting applications such as pathways and building entrances found at retail centers, business parks, schools, transit centers, and medical facilities. Choice of optics include cone reflectors, internal louvers or matte diffused polycarbonate lensing. Options include fusing, surge suppressors, GFCI outlets, house side shielding, microwave occupancy sensors, and emergency battery backup for added versatility.



Date: \_\_\_\_\_ Type: \_\_\_\_\_ Catalog Number: \_\_\_\_\_

Project Name: \_\_\_\_\_

### ORDERING INFORMATION

LUMINAIRE						
MODEL	OUTPUT	CCT	VOLTAGE	OPTIC	OPTIC TYPE	OPTION
PBR1-DSS Stainless Steel Bollard	LO Low Output (10 Watts)	30K 3000K	UNV 120-277V	T3 Type III Optics	SCR Specular Cone Reflector	SF Single Fuse (120-277V Only)
	SO Standard Output (15 Watts)	40K 4000K	347 347-480V <sup>1</sup>	T5 Type V Optics	WCR White Cone Reflector	DF Double Fuse (120-277V Only)
	HO High Output (22 Watts)	50K 5000K			LVR Louvers <sup>2</sup>	SP Surge Protection
					DPC Diffused Polycarbonate with White Cone Reflector <sup>2</sup>	GFCI GFCI Outlet (15A, 120V)
						HSS180BL 180° House-Side Shield, Black
						HSS180DB 180° House-Side Shield, Dark Bronze
						HSS180CC 180° House-Side Shield, Custom Color
						MSDP Internal Microwave Sensor <sup>3</sup>
						EM Emergency Battery Backup (90 Minutes, 120-277v Only)
						EMCS -4°F Cold Start Emergency Battery Backup (90 Minutes, 120-277v Only)

<sup>1</sup>347V is only available on the Standard Output Model.  
<sup>2</sup>Louvers and Diffused Polycarbonate With White Cone Reflector are only available with Type V Optics.  
<sup>3</sup>Internal Microwave Sensor has dimming and remote programming capabilities for mounting heights of 8' to 19'. Available on 120-277V bollards only.

See Page 4 for ordering information of available accessories.

# PBR1-DSS

## Stainless Steel Dome Top Illuminating Bollard



PHYSICAL	HOUSING	Formed 316L Stainless Steel Housing with Flush Mounting Base & Vandal-Resistant Screws, Domed Top, Internal Driver Tray for Easy Maintenance
	OVERALL DIMENSIONS	7" Diameter x 42" Height
	OPERATING TEMPERATURE	-40°F to 104°F (-40°C to 40°C)
	MOUNTING	Mounting Kit with 8" Anchor Bolts Included

ELECTRICAL	POWER	Low Output	Standard Output	High Output
		10 Watts	15 Watts	22 Watts
	CURRENT	0.08 amps at 120 volts 0.04 amps at 277 volts	0.13 amps at 120 volts 0.05 amps at 277 volts	0.18 amps at 120 volts 0.08 amps at 277 volts
		0-10V Dimming		

PHOTOMETRIC	LED	3000K	4000K	5000K	
	DELIVERED LUMEN OUTPUT	up to 2178 lumens	up to 2362 lumens	up to 2461 lumens	
	EFFICACY	up to 91.5 lumens per watt	up to 99.2 lumens per watt	up to 103.4 lumens per watt	
	CRI	80			
	LUMEN MAINTENANCE	L70 > 50,000 Hours at 77°F*			
	LIGHT CONTROL ACCESSORIES	Cone Reflector, Louvers, Diffusers Available			
	BUG RATING		Low Output	Standard Output	High Output
		Cone Reflector Type III	B0-U2-G1	B1-U3-G1	B1-U3-G1
		Cone Reflector Type V	B1-U3-G1	B1-U3-G1	B1-U3-G1
		Louvers Type V	B0-U2-G0	B1-U2-G1	B1-U3-G1

LIGHT DISTRIBUTIONS	OPTIC	CCT	DATA	LOW OUTPUT	STANDARD OUTPUT	HIGH OUTPUT
	Cone Reflector Type III	3000K	LUMENS	738	1033	1549
			EFFICACY	65	65	65
		4000K	LUMENS	800	1120	1680
			EFFICACY	71	70	71
		5000K	LUMENS	834	1167	1750
			EFFICACY	74	73	74
	Cone Reflector Type V	3000K	LUMENS	1031	1444	2165
			EFFICACY	91	91	91
		4000K	LUMENS	1119	1566	2349
			EFFICACY	99	98	99
		5000K	LUMENS	1165	1631	2477
			EFFICACY	103	103	104
	Louvers Type V	3000K	LUMENS	521	730	1094
			EFFICACY	46	46	46
		4000K	LUMENS	565	791	1187
			EFFICACY	50	50	50
		5000K	LUMENS	589	824	1236
			EFFICACY	52	52	52

Values based on full output.

PBR1-DSS

Stainless Steel Dome Top Illuminating Bollard



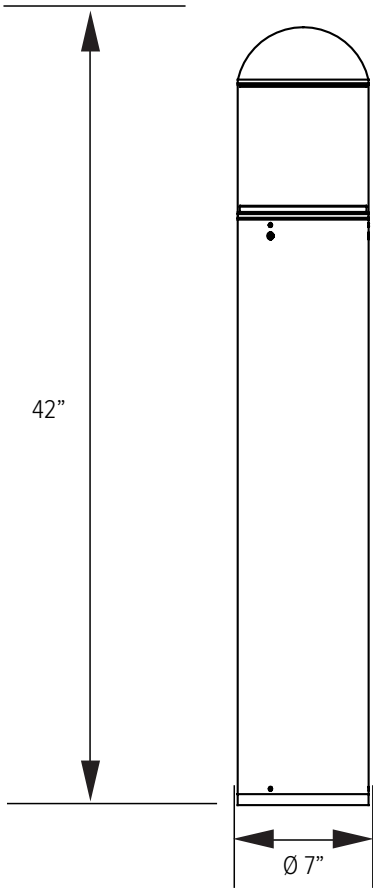
CERTIFICATIONS	SAFETY	CSA Certified
	INGRESS PROTECTION	IP65 Rated for Wet Locations
	WARRANTY	Limited Five Year Warranty

OPTICS

CONE REFLECTOR	LOUVERS	DIFFUSE POLYCARBONATE
		

DIMENSIONS

All dimensions are shown in inches unless otherwise noted.



# PBR1-DSS

## Stainless Steel Dome Top Illuminating Bollard



### ACCESSORIES

Accessories are sold separately and will be field installed. See page one for factory-installable options.

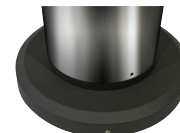
#### MSPRGMR

Remote Programming Tool for Internal Microwave Sensor



#### RFBASE

Bollard Retrofit Base Kit Adapts New Bollards to Most Existing Bolt Patterns.  
Die Cast with Powdercoat Finish, Hardware Included. 11 1/2" Dia. x 1 1/2" H



### ORDERING INFORMATION

#### MOUNTING ACCESSORIES

##### PBR1-MK04AB

Mounting Kit- Includes Bracket and (3) 4" Zinc-Plated Anchor Bolts

##### PBR1-MK08AB (INCLUDED)

Mounting Kit- Includes Bracket and (3) 8" Zinc-Plated Anchor Bolts

##### PBR1-MK012AB

Mounting Kit- Includes Bracket and (3) 12" Zinc-Plated Anchor Bolts

##### PBR1-MK015AB

Mounting Kit- Includes Bracket and (3) 15" Zinc-Plated Anchor Bolts

##### PBR1-RFBASE-BL

Bollard Retrofit Base - Black - Die-Cast - ø11.5" x 1.5" H - Hardware Included - Adapts New Bollards to Most Existing Bolt Patterns

##### PBR1-RFBASE-DB

Bollard Retrofit Base - Dark Bronze - Die-Cast - ø11.5" x 1.5" H - Hardware Included - Adapts New Bollards to Most Existing Bolt Patterns

##### PBR1-RFBASE-CC

Bollard Retrofit Base - Black - Custom RAL Color - ø11.5" x 1.5" H - Hardware Included - Adapts New Bollards to Most Existing Bolt Patterns

##### MSPRGMR

Remote Programming Tool for Use With PBR1-MSDP

#### REPLACEMENT PARTS

##### PBR1-MSDP

Internal Microwave Sensor with Dimming and Remote Programming (120 to 277v Only)

##### PBR1-PCLENS-CLEAR

Round UV Stabilized Polycarbonate Lens

##### PBR1-PCLENS-OPAL

Diffused Opal Polycarbonate Lens

##### PBR1-BBASE-BL

Die-Cast Aluminum Base Plate - Black Finish

##### PBR1-BBASE-DB

Die-Cast Aluminum Base Plate - Dark Bronze Finish

##### PBR1-BBASE-CC

Die-Cast Aluminum Base Plate - Custom RAL Color

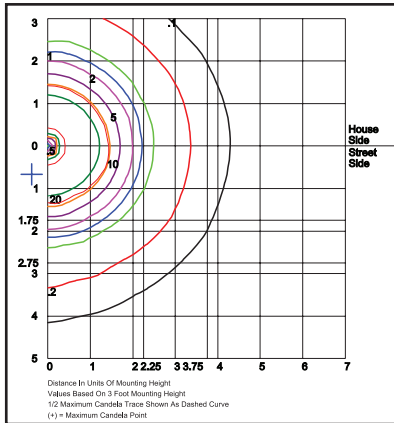
##### PBR1-ADP1

Adapter Plate With Gaskets for Outlet Boxes - Die-Cast Aluminum - Dark Bronze Finish

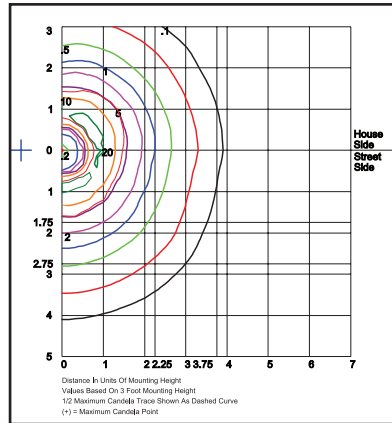
## Stainless Steel Dome Top Illuminating Bollard



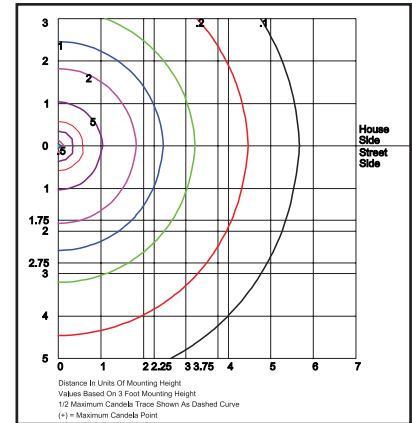
## PHOTOMETRIC DATA



PBR1-DSS-22W-50K-UNV-T5-SCR/WCR  
Grid in feet, mounting height = 3'



PBR1-DSS-22W-50K-UNV-T5-LVR  
Grid in feet, mounting height = 3'



PBR1-DSS-22W-50K-UNV-T5-DPC  
Grid in feet, mounting height = 3'