

DESCRIPTION

The PWP3 architectural wall pack features simple semi-cylindrical styling that easily integrates into a wide variety of commercial architecture. It is suitable for venues ranging from retail malls, corporate and medical campuses to industrial parks, transportation centers, and schools or universities. The luminaire is durable die-cast aluminum with horizontal tempered flat glass lens for zero uplight. The wall pack is recommended for mounting heights from 12' to 20' depending on illumination levels and uniformity requirements. Options include 10KV surge protection for regions requiring additional protection to emergency battery backup for normal or cold temperature environments.



Date: _____ Type: _____ Catalog Number: _____



Project Name: _____

ORDERING INFORMATION

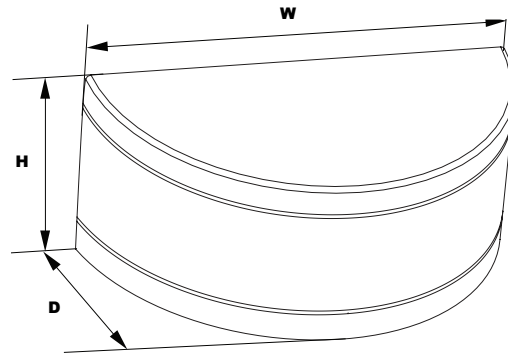
MODEL	WATTAGE	CCT	VOLTAGE	DISTRIBUTION	FINISH	OPTIONS
PWP3 Architectural LED Wall Pack	23W	30K 3000K	UNV 120-277V	T3 Type III	BRZ Bronze	SF Single Fuse, 120-277V models only
	47W	40K 4000K	347V 347-480V		CC Custom Color	DF Double Fuse, 120-277V models only
		50K 5000K				SP Surge Protection - 10KV
						PC Photocell, 120-277VAC
						EM Emergency Battery Backup 120-277V models only
						EMC Cold Start Emergency Battery Backup -20°C, 90 Minutes 120-277V models only

* DLC Qualified : PWP3-47W-50K-UNV (Production Code: WP35QC1X47U5KC**)

PRODUCT SPECIFICATIONS

DELIVERED LUMENS	23W: 2328 to 2408 lumens 47W: 4552 to 4921 lumens depending on color temperature
EFFICACY	From 86 to 94 lumens per watt depending on wattage and color temperature (see photometric data chart for details)
LUMEN MAINTENANCE	L70 > 347,000 @ 25°C (based on 5000K CCT)
COLOR TEMPERATURES	3000K, 4000K, 5000K
CRI	80CRI
OPTICS	Type III
OPERATING TEMPERATURE	-40°C to +40°C (-40°F to +104°F)
POWER CONSUMPTION	23 watt model: 26 watt system 47 watt model : 52 watt system
DRIVER	Electronic Driver, 120-277V, 50/60Hz or 347-480V, 50/60Hz; Less Than 20% THD and PF>0.90. Standard Internal Surge Protection is 6kV. 0-10V Dimming Standard for a Dimming Range of 100% to 10%; Dimming Source Current is 150 Microamps.
CERTIFICATIONS	 CSA Certified for Wet Locations, ANSI/UL 1598, 8750  DLC Qualified : PWP3-47W-50K-UNV (Production Code: WP35QC1X47U5KC**)
INGRESS PROTECTION	IP66 Sealed LED Compartment
HOUSING	Die-cast aluminum housing with full cutoff frame. Nickel-plated stainless steel hardware.
LENS	Clear flat tempered glass
FINISH	Textured bronze powdercoat finish over a chromate conversion coating. Custom colors available upon request.
MOUNTING OPTIONS	Luminaire mounts over a 4" recessed outlet box. Includes Easy-Hand "Two Hands Free" wall mounting bracket with built-in level.
WARRANTY	5-Year Warranty for -40°C to +50°C Environment.

DIMENSIONS	
Width (W)	18" (458mm)
Depth (D)	7 1/8" (181mm)
Height (H)	9 1/8" (232mm)



PHOTOMETRIC PERFORMANCE

Optic	CCT	23W Delivered Lumens @ 26w Input Power	47W Delivered Lumens @ 52w Input Power
TYPE III	3000K	2,228	4,552
	4000K	2,318	4,736
	5000K	2,408	4,921
	BUG Rating	B1-U1-G1	B1-U1-G1

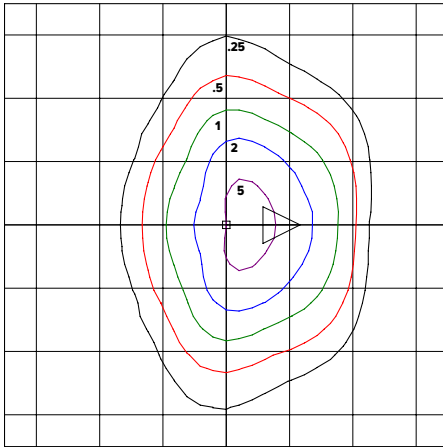
PROJECTED LUMEN MAINTENANCE

Data shown for 5000 CCT / 47W model						
TM-21-11	Input Watts	Initial	25,000 Hrs	50,000 Hrs	100,000 Hrs	Calculated LED Life
L70 Lumen Maintenance @ 25°C / 77°F	52W	1.00	0.98	0.96	0.91	347,000
L70 Lumen Maintenance @ 50°C / 122°F		1.00	0.96	0.91	0.82	168,000
L80 Lumen Maintenance @ 40°C / 104°F		1.00	0.97	0.94	0.88	160,000

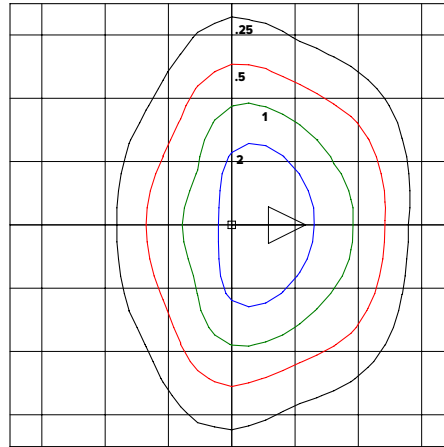
NOTES:

1. Projected per IESNA TM-21-11. Data references the extrapolated performance projections for the 525mA base model in a 25°C ambient, based on 10,000 hours of LED testing per IESNA LM-80-08.

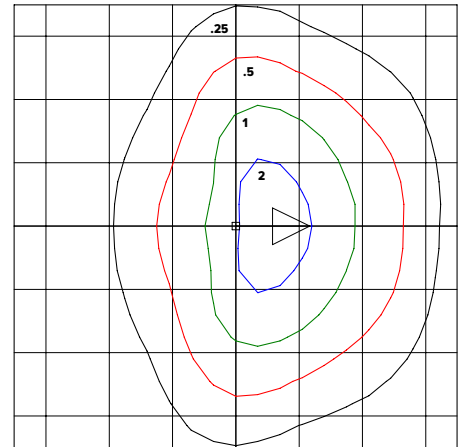
PHOTOMETRIC DATA



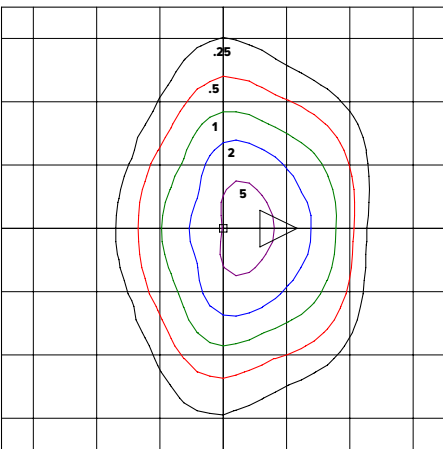
PWP3-47W-30K-UNV-T3-BRZ
3000K Mounting Height = 12.00 Ft. Each Square = 12 Ft.



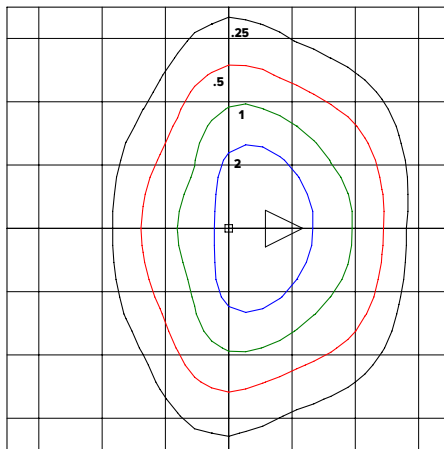
PWP3-47W-30K-UNV-T3-BRZ
3000K Mounting Height = 16.00 Ft. Each Square = 12 Ft.



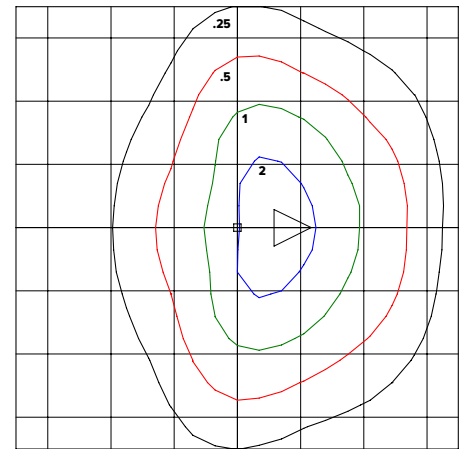
PWP3-47W-30K-UNV-T3-BRZ
3000K Mounting Height = 20.00 Ft. Each Square = 12 Ft.



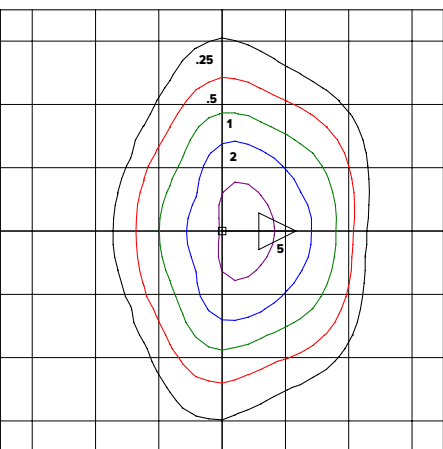
PWP3-47W-40K-UNV-T3-BRZ
4000K Mounting Height = 12.00 Ft. Each Square = 12 Ft.



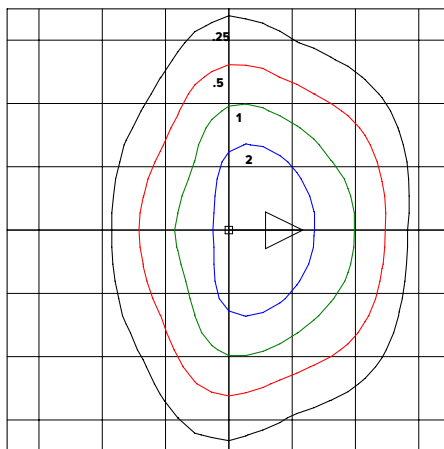
PWP3-47W-40K-UNV-T3-BRZ
4000K Mounting Height = 16.00 Ft. Each Square = 12 Ft.



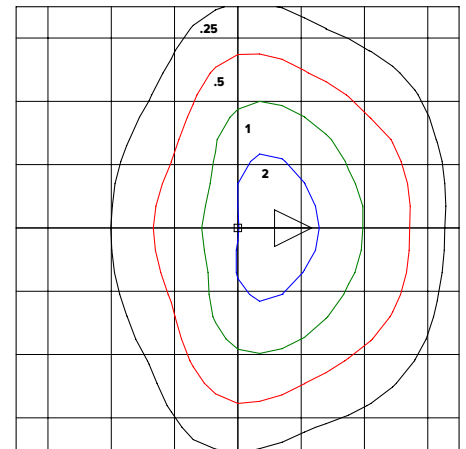
PWP3-47W-40K-UNV-T3-BRZ
4000K Mounting Height = 20.00 Ft. Each Square = 12 Ft.



PWP3-47W-50K-UNV-T3-BRZ
5000K Mounting Height = 12.00 Ft. Each Square = 12 Ft.



PWP3-47W-50K-UNV-T3-BRZ
5000K Mounting Height = 16.00 Ft. Each Square = 12 Ft.



PWP3-47W-50K-UNV-T3-BRZ
5000K Mounting Height = 20.00 Ft. Each Square = 12 Ft.