

RTS

Round Tapered Steel Pole



DESCRIPTION

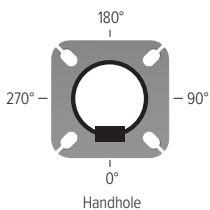
Pantheon steel poles are ideal for commercial, industrial, municipal, and retail applications requiring a high quality and cost effective pole to support lighting, banners, security devices, and other pole mounted site elements. Pantheon poles are made of weldable grade cold rolled carbon steel tubing conforming to ASTM A500 Grade B. Fabricated to the highest standards, Pantheon poles come in round and square straight steel versions as well as round tapered to meet your application needs. Hot rolled carbon steel base with anchor bolts ensure a strong and dependable mounting. Standard or custom drill mount and tenon mount options are easy to specify along with crossarms and coupling options and electrical box details for a complete offering.



ORDERING INFORMATION

ROUND TAPERED STEEL POLE												
MODEL	HEIGHT	GAUGE	BUTT Ø	TOP Ø	BASE	MOUNTING ¹	ELECTRICAL BOX ¹	ACCESSORIES & OPTIONS	FINISH			
RTS Round Tapered Steel Pole	10	11G	45	XX* *See chart on page 2 to make top diameter selection. Then, enter the selected dimension as a whole number. For example, if 3.9-inches is chosen, "39" should be entered.	4 4-Bolt Base	DRILL MOUNTING	D000	FA	C12 ²	POWDER COAT		
	10'	11-Gauge	4.5"				No Drilling	30" Up @ 180°	Threaded Coupling 1/2"		BA Black	
	14	7G	52				D190	FB	C34 ²		GC Grey	
	14'	7-Gauge	5.2"				1 @ 90°	30" Up @ 0°	Threaded Coupling 3/4"			BH White
	20		61				D290	FC	C10 ²			XX Custom RAL Color
	20'		6.1"				2 @ 90°, 180°	30" Up @ 90°	Threaded Coupling 1"			
	25		66			D218	FD	EHH ²	1Q Galvanized Only			
	25'		6.6"			2 @ 90°, 270°	30" Up @ 270°	Extra Handhole		BV Dark Green		
	30		68			D390	FE	GF1		1C Black Powder Coat over Galvanizing		
	30'		6.8"			3 @ 90°, 180°, 270°	36" Up @ 180°	Duplex GFCI Receptacle with Cover	GC Grey			
	35		75			D490	FF	GF2	1D White Powder Coat over Galvanizing			
	35'		7.5"			4 @ 0°, 90°, 180°, 270°	36" Up @ 0°	Duplex GFCI Receptacle with In-Use Cover		XX Custom RAL Color		
39		80	DCUS	FG	LAB	1B Dark Bronze Powder Coat over Galvanizing						
39'		8"	Custom; Specify Orientation and Height	36" Up @ 90°	Less Anchor Bolts		1Y Dark Green Powder Coat over Galvanizing					
45		85	T204	FH	LPC	1J Grey Powder Coat over Galvanizing						
45'		8.5"	2 3/8" OD x 4" Tenon	36" Up @ 270°	Less Pole Cap		XX Special Powder Coat over Galvanizing					
50		90	T304	FI	PAB	11 Dark Green Powder Coat over Galvanizing						
50'		9"	2 7/8" OD x 4" Tenon	24" Up @ 180°	Pre-Shipped Anchor Bolts		12 12"					
		10	T356	FK	VD2	11 Dark Green Powder Coat over Galvanizing						
		10"	3 1/2" OD x 6" Tenon	24" Up @ 90°	Vibration Dampener: 2 nd Mode		12 12"					
		11	T406	FL		11 Dark Green Powder Coat over Galvanizing						
		11"	4" OD x 6" Tenon	24" Up @ 270°			12 12"					
		12	TCUS	FZ		11 Dark Green Powder Coat over Galvanizing						
		12"	Custom; Specify Orientation and Height	Custom; Specify Orientation and Height			12 12"					

Drawing A
Pole Orientation - Plan View



¹See Drawing A for orientation degree relative to handhole position.

²Specify location for applicable accessories and options.

RTS

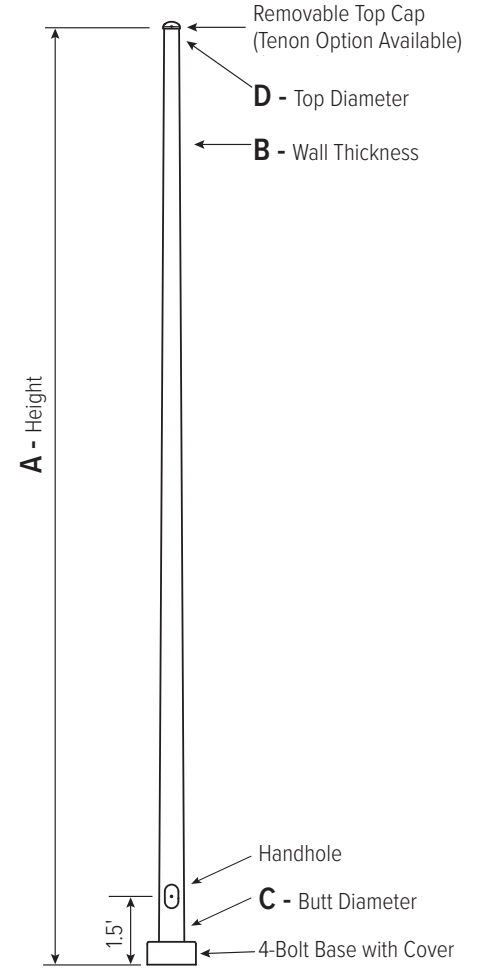
Round Tapered Steel Pole



POLE

Pole shaft shall be weldable-grade, hot-rolled, commercial quality carbon steel tubing conforming to ASTM A595 Grade A. Options include 11 gauge and 7 gauge. All welds shall conform to AWS D1.1 using ER70S-6 electrodes.

A HEIGHT	B WALL GAUGE	C BUTT Ø	D TOP Ø	TOTAL LUM. WEIGHT	MAXIMUM EPA					
					90	100	110	120	130	140
10	11	4.5	3.1	370	31.5	25.2	23.5	19.5	16.4	14.0
14	11	5.2	3.1	365	30.4	24.2	22.5	18.5	15.5	13.2
20	11	6.1	3.3	340	25.9	20.4	18.8	15.4	12.8	10.8
20	11	6.6	3.7	385	25.5	20.0	18.5	15.2	12.6	10.7
25	11	6.1	2.6	280	19.0	14.7	13.5	10.8	8.8	7.2
25	11	6.8	3.3	325	19.4	15.0	13.8	11.1	9.1	7.5
30	11	6.8	2.6	275	14.6	11.1	10.1	7.9	6.2	5.0
30	11	7.5	3.3	315	23.3	18.0	16.6	13.4	11.0	9.1
30	11	8	3.8	345	27.4	21.4	19.7	16.1	13.4	11.3
30	11	8.5	4.3	375	31.3	24.7	22.9	18.8	15.8	13.4
30	11	9	4.8	405	35.2	27.9	25.9	21.5	18.1	15.4
30	7	9	4.8	585	57.0	45.6	42.5	35.4	29.9	25.6
35	11	7.5	2.6	265	17.0	13.1	11.9	9.4	7.5	6.0
35	11	8	3.1	295	20.6	15.8	14.5	11.5	9.3	7.6
35	11	8.5	3.6	320	23.9	18.4	17.0	13.7	11.2	9.3
35	11	9	4.1	345	26.9	21.0	19.4	15.8	13.1	11.1
35	7	9	4.1	490	44.9	35.5	33.0	27.2	22.9	19.4
39	11	8	2.5	260	15.8	12.1	11.1	8.7	6.8	5.4
39	11	9	3.5	305	21.9	16.8	15.4	12.3	10.0	8.2
39	7	9	3.5	425	36.6	28.8	26.7	21.9	18.2	15.4
39	11	10	4.5	350	25.4	19.8	18.2	14.9	12.4	10.4
39	7	11	5.5	600	53.7	43.0	40.0	33.2	27.8	23.6



2-PIECE SHAFT DESIGN

A HEIGHT	B WALL GAUGE	C BUTT Ø	D TOP Ø	TOTAL LUM. WEIGHT	MAXIMUM EPA					
					90	100	110	120	130	140
45	11	10	3.9	285	19.2	14.6	13.4	10.5	8.5	7.0
45	7	11	4.9	510	41.1	32.5	30.3	24.9	20.8	17.5
45	7	12	5.9	600	57.9	47.3	44.4	37.1	31.7	26.7
50	11	10	3.2	250	15.7	11.5	10.3	7.9	6.0	4.7
50	7	11	4.2	495	34.4	26.9	24.7	20.9	16.7	13.9
50	7	12	5.2	525	41.2	33.0	30.9	25.6	21.9	18.7

C BUTT Ø	F BOLT CIRCLE Ø	G BASE SQUARE	H BOLT PROJECTION	I BOLT SIZE
4.5	7.5-8.5	8	3.75	.75 × 17 × 3
5.2	8 - 9	8.5	3.75	.75 × 17 × 3
6.1 - 6.6	9.5 - 10.5	10	3.75	.75 × 30 × 3
6.8	10 - 11	10	3.75	.75 × 30 × 3
7.0* - 7.5	10.5 - 11.5	10.5	4.875	1 × 36 × 4
8.0	11 - 12	11	4.875	1 × 36 × 4
8.5	11.5-12.5	12	4.875	1 × 36 × 4
9.0 (11-Gauge)	12 - 13	12.375	4.875	1 × 36 × 4
9.0 (7-Gauge)	13 - 14	12.75	5.875	1.25 × 48 × 6
10	13.5 - 14.5	13	4.875	1 × 48 × 4
11	15 - 16	14	5.875	1.25 × 48 × 6
12	16 - 17	15.5	6.75	1.5 × 54 × 6

Powder Coated, Galvanized or Powder Coated over Galvanized Finish Per Customer Specification.

EPA NOTES: Effective Projected Area (EPA) in square feet. EPA's calculated using wind velocity (mph) indicated in accordance with 2009 AASHTO LTS-5 using a 25-year design life. Maximum EPA is based on the luminaire weight shown. Increased luminaire weight may reduce the maximum EPA. If weight is exceeded, or if other design life or code is required, please consult the factory.

* Nominal

Dimensions in Inches



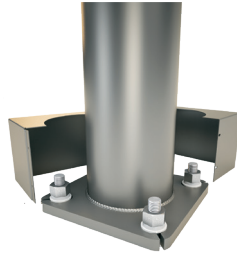
www.PantheonLighting.com

For other Experience® Brands companies, please visit www.experiencebrandsusa.com

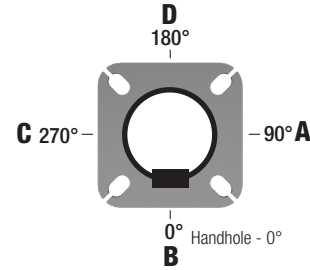
In a continuing effort to offer the best product possible, we reserve the right to change, without notice, specifications or materials. Technical specification sheets that appear on www.pantheonlighting.com are the most recent ones available.

BASE STYLE

4-Bolt Steel Base Plate of fabricated hot rolled carbon steel conforming to ASTM A36 or equivalent (36 ksi minimum yield) with 2-piece Base Cover and attaching hardware. Base Cover will be fabricated from metal materials.

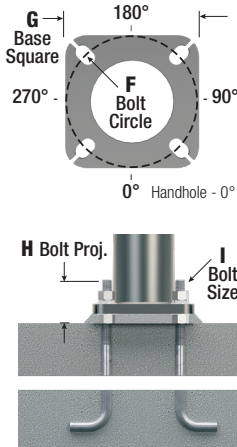


POLE ORIENTATION



ANCHORAGE

Anchorage Kit will include four (4) L-shaped Steel Anchor Bolts conforming to AASHTO M314-90 Grade 55. Ten inches (10") of threaded end will be galvanized per ASTM A153. Kits will contain eight (8) Hex Nuts, four (4) Lock Washers, and eight (8) Flat Washers (all components Galvanized Steel). A paper bolt circle template will be provided.



MOUNTING OPTIONS

SIDE DRILL MOUNT

Includes removable pole cap.

NOTE: A luminaire drilling template must be supplied at time of order.



TENON MOUNT

For Tenon Mount applications specify both Tenon diameter and length.



HANDHOLE

UP TO 5.9" BUTT DIAMETERS

Reinforced, 3" x 5" Handhole with cover, stainless steel screw and backbar. A grounding provision incorporating a tapped 1/2"-13NC hole will be provided.

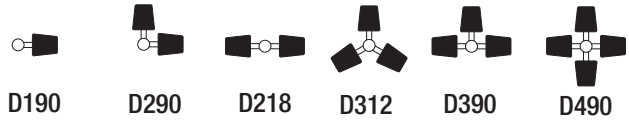


6"+ BUTT DIAMETERS

Reinforced, 4" x 6 1/2" Handhole with cover, stainless steel screw and backbar. A grounding provision incorporating a tapped 1/2"-13NC hole will be provided.



DRILL MOUNT OPTIONS



ELECTRICAL BOX

NOTE: GFCI options must be specified in Accessories.



BOX ONLY

GFCI

Duplex GFCI
Receptacle with Cover

GFCI/IU

Duplex GFCI
Receptacle
with In-Use Cover

BASE COVER

Square metal powder coated Base Covers are standard on all RTS poles.



VIBRATION DAMPER

If determined necessary by Pantheon Lighting, an internal, factory installed, Second Mode Vibration Damper will be provided. Customer specification of the damper is available.

ADDERS

FLOODLIGHT CROSSARM ADDERS		
Single Side Mount Square Floodlight Arm for SSS	SQARM-SQSS	
Single Side Mount Round Floodlight Arm for SSS	RDARM-SQSS	
Double Square Floodlight Arm (In Line 3')	DBLARM-LN3	
Triple Square Floodlight Arm (In Line 5'6")	TPLARM-LN5.5	
Quad Square Floodlight Arm (4 @ 90°)	QUDARM-4	
Quad Square Floodlight Arm (In-Line 5'6")	QUDARM-LN5.5	
Quad Square Floodlight Arm, (In-Line 6'6")	QUDARM-LN6.5	

ALUMINUM BULLHORN CROSSARM ADDERS		
Double Bull-Horn (In Line, 3')	DBLBHRN-LN3	
Triple Bull-Horn (In Line, 5')	TPLBHRN-LN5	
Triple Bull-Horn, (3 @ 120°)	TPLBHRN-3	
Quad Bull-Horn (In-Line, 7' 6")	QUSBHRN-LN7.5	
Quad Bull-Horn (4 @ 90°)	QUSBHRN-4	

FREIGHT POLICY

Pole and Accessory prices are freight prepaid and included on all orders to Continental United States.

All freight allowed orders are subject to be held for freight consolidation (maximum of 2 weeks).

Pre-shipped Anchor Bolts requires a freight adder.