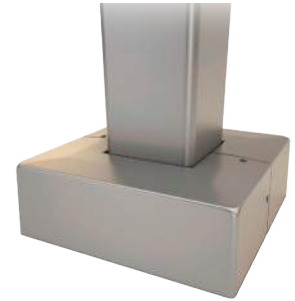


DESCRIPTION

Pantheon steel poles are ideal for commercial, industrial, municipal, and retail applications requiring a high quality and cost effective pole to support lighting, banners, security devices, and other pole mounted site elements. Pantheon poles are made of weldable grade cold rolled carbon steel tubing conforming to ASTM A500 Grade B. Fabricated to the highest standards Pantheon poles come in round and square straight steel versions as well as round tapered to meet your application needs. Hot rolled carbon steel base with anchor bolts ensure a strong and dependable mounting. Standard or custom drill mount and tenon mount options are easy to specify along with crossarms and coupling options and electrical box details for a complete offering.



Date: _____ Type: _____ Catalog Number: _____

Project Name: _____

ORDERING INFORMATION

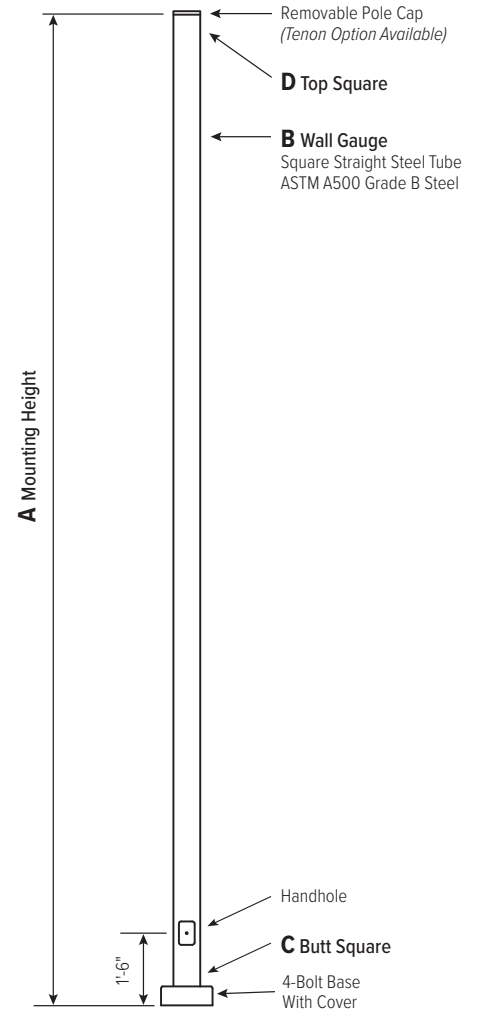
SQUARE STRAIGHT STEEL POLE							
HEIGHT	MODEL	GAUGE	BUTT SQ.	FINISH	MOUNTING	ELECTRICAL BOX*	ACCESSORIES
10 10'	SQSS	11G 11 gauge	4 4"	BPC Black Powder Coat	D0 No Drilling	EB24A 24" Up @ 90°	TC.5 Threaded Coupling 1/2"
12 12'		7G 7 gauge	5 5"	WPC White Powder Coat	D1 1 @ 90°	EB24C 24" Up @ 270°	TC.75 Threaded Coupling 3/4"
14 14'			6 6"	BRZPC Dark Bronze Powder Coat	D2 2 @ 90°, 180°	EB24D 24" Up @ 180°	TC1 Threaded Coupling 1"
16 16'				GPC Gray Powder Coat	D3 2 @ 90°, 270°	EB30A 30" Up @ 90°	EHH Extra Handhole (Specify Location)
18 18'				GO Galvanized Only	D4 3 @ 90°, 180°, 270°	EB30B 30" Up @ 0°	GFCI Duplex GFCI Receptacle with Cover
20 20'				BPCOG Black Powder Coat Over Galvanized	D5 4 @ 0°, 90°, 180°, 270°	EB30C 30" Up AT 270°	GFCI/IU Duplex GFCI Receptacle with In-Use Cover
22 22'				WPCOG White Powder Coat Over Galvanized	DC Custom Drilling	EB30D 30" Up @ 180°	
25 25'				BRZPCOG Dark Bronze Powder Coat Over Galvanized	2.375TN 2 3/8" O.D. x 4" Tenon	EB36A 36" Up @ 90°	
28 28'				GPCOG Gray Powder Coat Over Galvanized	2.875TN 2 7/8" O.D. x 4" Tenon	EB36B 36" Up @ 0°	
30 30'				CCPC Custom Color (Provide RAL# or Sample Color Chip)	3.5TN 3 1/2" O.D. x 6" Tenon	EB36C 36" Up @ 270°	
35 35'					4TN 4" O.D. x 6" Tenon	EB36D 36" Up @ 180°	
39 39'					CT Custom Tenon	EBC Custom (Specify Height and Orientation)	

* GFI Receptacle Options Available : Specify in Accessories

POLE

Pole shaft shall be weldable-grade, cold-rolled, commercial quality carbon steel tubing conforming to ASTM A500 Grade B. Options include 11 gauge and 7 gauge. All welds shall conform to AWS D1.2 using ER70S-6 electrodes.

A MTG. HGT.	B WALL GAUGE	C BUTT SQ.	TOTAL LUM. WEIGHT	MAXIMUM EPA					
				90	100	110	120	130	140
10	11	4	320	25.2	20.0	18.6	15.3	12.7	10.6
12	11	4	285	20.6	16.2	14.9	12.1	9.9	8.2
14	11	4	255	17.0	13.2	12.1	9.7	7.8	6.3
15	11	4	245	15.5	11.9	10.9	8.6	6.8	5.4
15	7	4	305	23.4	18.4	17.0	13.8	11.4	9.4
16	11	4	235	14.0	10.7	9.7	7.6	5.9	4.6
16	7	4	290	21.5	16.8	15.5	12.5	10.2	8.4
18	11	4	215	11.3	8.4	7.6	5.7	4.3	3.2
18	7	4	265	18.0	13.9	12.8	10.2	8.2	6.6
20	11	4	200	9.1	6.5	5.8	4.2	2.9	1.9
20	11	5	235	14.1	10.3	9.2	6.8	4.9	3.4
20	7	4	240	15.1	11.5	10.5	8.2	6.5	5.0
20	7	5	330	26.3	20.3	18.6	14.8	11.9	9.6
22	11	4	200	7.2	4.9	4.2	2.8	1.7	0.8
22	11	5	215	11.4	8.0	7.1	4.9	3.2	1.9
22	7	4	225	12.7	9.5	8.6	6.6	5.0	3.7
22	7	5	300	22.4	17.1	15.6	12.2	9.6	7.5
25	11	4	200	4.7	2.8	2.2	1.0	-	-
25	11	5	200	8.0	5.1	4.3	2.4	1.0	-
25	7	4	205	9.7	6.9	6.2	4.4	3.1	2.0
25	7	5	260	17.7	13.2	11.9	9.0	6.7	4.9
28	11	4	200	2.6	1.0	-	-	-	-
28	11	5	200	5.1	2.6	1.9	-	-	-
28	7	4	200	7.1	4.8	4.1	2.6	1.5	-
28	7	5	235	13.9	9.9	8.8	6.3	4.3	2.7
30	11	5	200	3.4	1.1	-	-	-	-
30	7	4	200	5.6	3.5	2.9	1.6	-	-
30	7	5	215	11.7	8.0	7.0	4.7	2.9	1.5
30	7	6	275	19.2	13.7	12.2	8.7	5.9	3.8
35	7	5	200	6.9	4.0	3.1	1.2	-	-
35	7	6	220	12.6	8.0	6.8	3.9	1.6	-
39	7	6	200	8.2	4.2	3.1	0.6	-	-



Powder Coated, Galvanized or Powder Coated over Galvanized Finish Per Customer Specification.

C BUTT SQ.	D TOP SQ.	F BOLT CIR. DIA.	G BASE SQ.	H BOLT PROJ.	I BOLT SIZE
4 (11 Gauge)	4	8 - 9	8	3.75	.75 × 17 × 3
4 (7 Gauge)	4	8 - 9	8	3.75	.75 × 30 × 3
5 (11 Gauge)*	5	10 - 12	11	4.875	.75 × 30 × 3
5 (7 Gauge)	5	10 - 12	11	4.875	1 × 36 × 4
6	6	11 - 13	12.5	4.875	1 × 36 × 4

*Requires the use of oversized washers (provided).

Dimensions in Inches

EPA NOTES: Effective Projected Area (EPA) in square feet. EPA's calculated using wind velocity (mph) indicated in accordance with 2009 AASHTO LTS-5 using a 25-year design life. Maximum EPA is based on the luminaire weight shown. Increased luminaire weight may reduce the maximum EPA. If weight is exceeded, or if other design life or code is required, please consult the factory.

WARNING: Do not install light pole without luminaire.

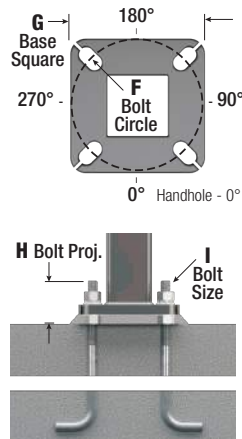
BASE STYLE

4-Bolt Steel Plate Base Flange of fabricated hot rolled carbon steel conforming to ASTM A36 or equivalent (36 ksi minimum yield) with 2-piece Base Cover and attaching hardware.

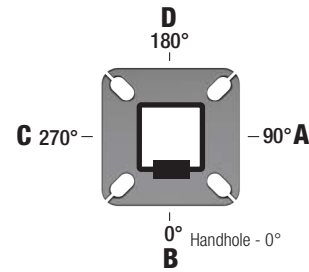


ANCHORAGE

Anchorage Kit will include four (4) L-shaped Steel Anchor Bolts conforming to AASHTO M314-90 Grade 55. Ten inches (10") of threaded end will be galvanized per ASTM A153. Kits will contain eight (8) Hex Nuts, four (4) Lock Washers, and eight (8) Flat Washers (all components Galvanized Steel). A paper bolt circle template will be provided.



POLE ORIENTATION



MOUNTING OPTIONS

SIDE DRILL MOUNT

Includes removable pole cap.

NOTE: A luminaire drilling template must be supplied at time of order.



TENON MOUNT

For Tenon Mount applications specify both Tenon diameter and length.



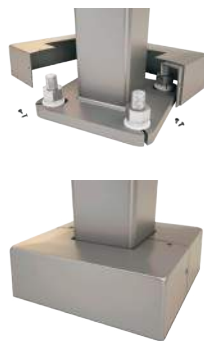
HANDHOLE

Reinforced, 3" x 5" Handhole with cover, stainless steel screw and backbar. A grounding provision incorporating a tapped 1/2"-13NC hole will be provided.

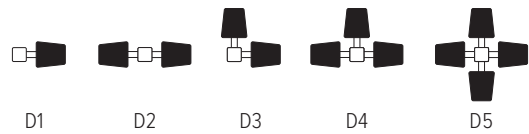


BASE COVER

Square ABS plastic Base Covers are standard on all SQSS poles specified in BPC-Black, BRZPC-Dark Bronze and WPC-White. SQSS poles specified in all other colors will be manufactured of metal materials. Custom specification of SQSS square metal style Base Covers in BPC, BRZPC, GPC-Gray, and WPC powder coated finishes is available.



DRILL MOUNT OPTIONS



ELECTRICAL BOX

NOTE: GFCI options must be specified in Accessories.



BOX ONLY

GFCI

Duplex GFCI
Receptacle with Cover

GFCI/IU

Duplex GFCI
Receptacle
with In-Use Cover

VIBRATION DAMPER

If determined necessary by Pantheon Lighting, a top-mount, field installed First Mode Vibration Damper will be provided. Customer specification of the damper is available.

ADDERS

FLOODLIGHT CROSSARM ADDERS

Single Side Mount Square Floodlight Arm for SSS

SQARM-SQSS



Single Side Mount Round Floodlight Arm for SSS

RDARM-SQSS



Double Square Floodlight Arm (In Line 3')

DBLARM-LN3



Triple Square Floodlight Arm (In Line 5'6")

TPLARM-LN5.5



Quad Square Floodlight Arm (4 @ 90°)

QUDARM-4



Quad Square Floodlight Arm (In-Line 5'6")

QUDARM-LN5.5



Quad Square Floodlight Arm, (In-Line 6'6")

QUDARM-LN6.5



ALUM BULLHORN CROSSARM ADDERS

Double Bull-Horn (In Line, 3')

DBLBHRN-LN3



Triple Bull-Horn (In Line, 5')

TPLBHRN-LN5



Triple Bull-Horn, (3 @ 120°)

TPLBHRN-3



Quad Bull-Horn (In-Line, 7' 6")

QUSBHRN-LN7.5



Quad Bull-Horn (4 @ 90°)

QUSBHRN-4



FREIGHT POLICY

Pole and Accessory prices are freight prepaid and included on all orders to Continental United States.

All freight allowed orders are subject to be held for freight consolidation (maximum of 2 weeks).

Pre-shipped Anchor Bolts requires a freight adder.